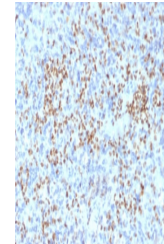


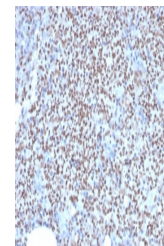
Product Datasheet

PU.1 Antibody / SPI1 (orb606611)

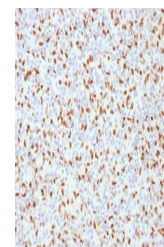
Description	PU.1 is a member of the ETS family of transcription factors and is important for normal B-cell devel...
Species/Host	Mouse
Reactivity	Human
Conjugation	Unconjugated
Tested Applications	FACS, IF, IHC-P, WB
Immunogen	A portion of amino acids 16-170 from the human protein was used as the immunogen for the PU.1 antibody.
Preservatives	0.2 mg/ml in 1X PBS with 0.1 mg/ml rAlbumin (US sourced) and 0.05% sodium azide
Storage	Store the PU.1 antibody at 2-8°C (with azide) or aliquot and store at -20°C or colder (without azide).
Note	For research use only
Application notes	Optimal dilution of the PU.1 antibody should be determined by the researcher.
Formula	0.2 mg/ml in 1X PBS with 0.1 mg/ml BSA (US sourced) and 0.05% sodium azide
Isotype	Mouse IgG2b, kappa
Clonality	Monoclonal
Purity	Protein G affinity chromatography
Uniprot ID	P17947
Hazard Information	This PU.1 antibody is available for research use only.
Dilution Range	Flow cytometry: 1-2ug/million cells,Immunofluorescence: 1-2ug/ml,Western blot: 1-2ug/ml,Immunohistochemistry (FFPE): 1-2ug/ml for 30 min at RT
Expiration Date	12 months from date of receipt.



IHC staining of FFPE human spleen with P...



IHC staining of FFPE human lymph node wi...



IHC staining of FFPE Hodgkin's lymphoma ...