
Product Datasheet

**Glycoprotein 2 Antibody / GP2 / ZAP75
(orb606609)**

Description

GP2 (Glycoprotein 2), also known as ZAP75, is a 537


Species/Host

Mouse

Reactivity

Human

Conjugation

Unconjugated

Tested Applications

ELISA, IHC-P, WB

Immunogen

A partial human recombinant protein corresponding to amino acids 35-179 was used as the immunogen for the Glycoprotein 2 antibody.

Preservatives

0.2 mg/ml in 1X PBS with 0.1 mg/ml rAlbumin (US sourced) and 0.05% sodium azide

Storage

Store the Glycoprotein 2 antibody at 2-8°C (with azide) or aliquot and store at -20°C or colder (without azide).

Note

For research use only

Application notes

Optimal dilution of the Glycoprotein 2 antibody should be determined by the researcher.

Formula

0.2 mg/ml in 1X PBS with 0.1 mg/ml BSA (US sourced) and 0.05% sodium azide

Isotype

Mouse IgG2c, kappa

Clonality

Monoclonal

Purity

Protein G affinity chromatography

Uniprot ID

P55259

Hazard Information

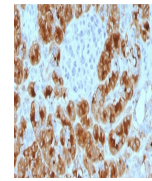
This Glycoprotein 2 antibody is available for research use only.

Dilution Range

ELISA: 2-4ug/ml (order BSA/azide-free format), Western blot: 1-2ug/ml, Immunohistochemistry (FFPE): 1-2ug/ml for 30 min at RT

Expiration Date

12 months from date of receipt.

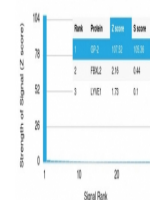


IHC testing of FFPE human pancreas with ...



Western blot testing of human pancreas I...

Human Protein Microarray Specificity Validation



Analysis of HuProt (TM) microarray conta...