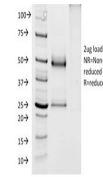

Product Datasheet

**Glycoprotein 2 Antibody / GP2 / ZAP75
(orb606608)**

Description

GP2 (Glycoprotein 2), also known as ZAP75, is a 537

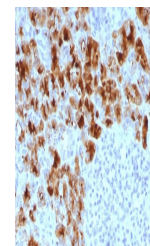
Species/Host	Mouse
Reactivity	Human
Conjugation	Unconjugated
Tested Applications	ELISA, IHC-P, WB
Immunogen	A partial human recombinant protein corresponding to amino acids 35-179 was used as the immunogen for the GP2 antibody.
Preservatives	0.2 mg/ml in 1X PBS with 0.1 mg/ml rAlbumin (US sourced) and 0.05% sodium azide
Storage	Store the GP2 antibody at 2-8°C (with azide) or aliquot and store at -20°C or colder (without azide).
Note	For research use only
Application notes	Optimal dilution of the GP2 antibody should be determined by the researcher.
Formula	0.2 mg/ml in 1X PBS with 0.1 mg/ml BSA (US sourced) and 0.05% sodium azide
Isotype	Mouse IgG2a, kappa
Clonality	Monoclonal
Purity	Protein G affinity chromatography
Uniprot ID	P55259
Hazard Information	This GP2 antibody is available for research use only.
Dilution Range	ELISA: 2-4ug/ml (order BSA/azide-free format), Western blot: 1-2ug/ml, Immunohistochemistry (FFPE): 1-2ug/ml for 30 min at RT
Expiration Date	12 months from date of receipt.

SDS-PAGE analysis of purified, BSA-free ...



Western blot testing of human pancreas I...



IHC testing of FFPE human pancreas with ...