

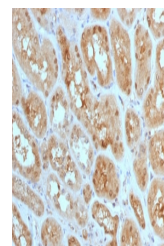
Product Datasheet

MTAP Antibody (orb606606)

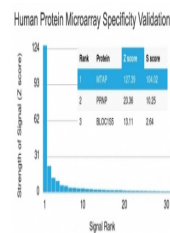
Description	Recognizes a protein of 31kDa, which is identified as MTAP (5'-deoxy-5'-methylthioadenosine phosphor...
Species/Host	Mouse
Reactivity	Human
Conjugation	Unconjugated
Tested Applications	ELISA, IHC-P, WB
Immunogen	A portion of amino acids 97-196 from the human protein was used as the immunogen for the MTAP antibody.
Preservatives	0.2 mg/ml in 1X PBS with 0.1 mg/ml rAlbumin (US sourced) and 0.05% sodium azide
Storage	Store the MTAP antibody at 2-8°C (with azide) or aliquot and store at -20°C or colder (without azide).
Note	For research use only
Application notes	Optimal dilution of the MTAP antibody should be determined by the researcher.
Formula	0.2 mg/ml in 1X PBS with 0.1 mg/ml BSA (US sourced) and 0.05% sodium azide
Isotype	Mouse IgG2b, kappa
Clonality	Monoclonal
Purity	Protein G affinity chromatography
Uniprot ID	Q13126
Hazard Information	This MTAP antibody is available for research use only.
Dilution Range	ELISA: 2-4ug/ml (order BSA/azide-free format), Western blot: 1-2ug/ml, Immunohistochemistry (FFPE): 1-2ug/ml for 30 min at RT
Expiration Date	12 months from date of receipt.



Western blot testing of human A431 cell ...



IHC staining of FFPE human kidney with M...



Analysis of HuProt (TM) microarray conta...