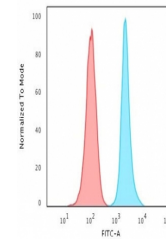


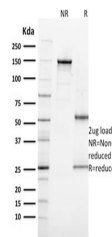
Product Datasheet

Ki67 Antibody (orb606603)

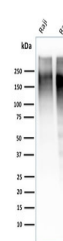
Description	Ki-67 antigen is a nuclear, non-histone protein that is present in all stages of the cell cycle exce...
Species/Host	Mouse
Reactivity	Human
Conjugation	Unconjugated
Tested Applications	FACS, IF, IHC-P, WB
Immunogen	A portion of amino acids 2293-2478 was used as the immunogen for the Ki67 antibody.
Preservatives	0.2 mg/ml in 1X PBS with 0.1 mg/ml rAlbumin (US sourced) and 0.05% sodium azide
Storage	Store the Ki67 antibody at 2-8°C (with azide) or aliquot and store at -20°C or colder (without azide).
Note	For research use only
Application notes	Optimal dilution of the Ki67 antibody should be determined by the researcher.
Formula	0.2 mg/ml in 1X PBS with 0.1 mg/ml BSA (US sourced) and 0.05% sodium azide
Isotype	Mouse IgG2b, kappa
Clonality	Monoclonal
Purity	Protein G affinity chromatography
Uniprot ID	P46013
Hazard Information	This Ki67 antibody is available for research use only.
Dilution Range	Flow cytometry: 1-2ug/million cells,Immunofluorescence: 1-2ug/ml,Immunohistochemistry (FFPE): 1-2ug/ml for 30 min at RT,Western blot: 1-2ug/ml
Expiration Date	12 months from date of receipt.



FACS testing of human HeLa cells with Ki...



SDS-PAGE analysis of purified, BSA-free ...



Western blot testing of human Raji and R...