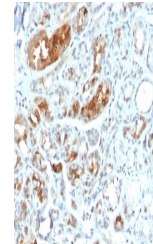


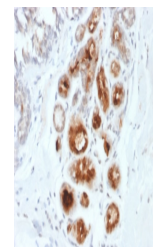
Product Datasheet

Mammaglobin A Antibody / SCGB2A2 (orb606602)

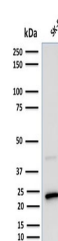
Description	Mammaglobin, also called Secretoglobin family 2A member 2, or SCGB2A2, is a 93 amino acid glycoprote...
Species/Host	Mouse
Reactivity	Human
Conjugation	Unconjugated
Tested Applications	IHC-P, WB
Immunogen	Full length recombinant human protein was used as the immunogen for the Mammaglobin antibody.
Preservatives	0.2 mg/ml in 1X PBS with 0.1 mg/ml rAlbumin (US sourced) and 0.05% sodium azide
Storage	Store the Mammaglobin antibody at 2-8°C (with azide) or aliquot and store at -20°C or colder (without azide).
Note	For research use only
Application notes	Optimal dilution of the Mammaglobin antibody should be determined by the researcher.
Formula	0.2 mg/ml in 1X PBS with 0.1 mg/ml BSA (US sourced) and 0.05% sodium azide
Isotype	Mouse IgG1, kappa
Clonality	Monoclonal
Purity	Protein G affinity chromatography
Uniprot ID	Q13296
Hazard Information	This Mammaglobin antibody is available for research use only.
Dilution Range	Western blot: 1-2ug/ml, Immunohistochemistry (FFPE): 1-2ug/ml for 30 min at RT
Expiration Date	12 months from date of receipt.



IHC testing of FFPE human breast carcino...



IHC testing of FFPE human breast carcino...



Western blot testing of human SK-BR-3 ce...