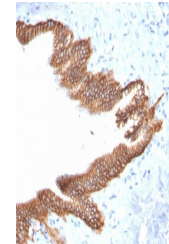


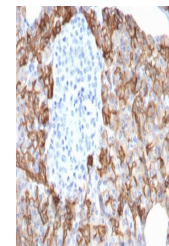
## Product Datasheet

### TROP2 Antibody (orb606595)

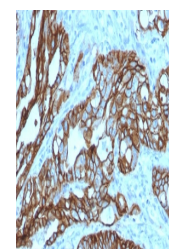
<b>Description</b>	TACSTD2, also called TROP2, is a cell surface glycoprotein receptor. It is a single pass type I memb...
<b>Species/Host</b>	Mouse
<b>Reactivity</b>	Human
<b>Conjugation</b>	Unconjugated
<b>Tested Applications</b>	IF, IHC-P
<b>Immunogen</b>	A portion of amino acids 31-274 were used as the immunogen for the TROP2 antibody.
<b>Preservatives</b>	0.2 mg/ml in 1X PBS with 0.1 mg/ml rAlbumin (US sourced) and 0.05% sodium azide
<b>Storage</b>	Store the TROP2 antibody at 2-8°C (with azide) or aliquot and store at -20°C or colder (without azide).
<b>Note</b>	For research use only
<b>Application notes</b>	Optimal dilution of the TROP2 antibody should be determined by the researcher.
<b>Formula</b>	0.2 mg/ml in 1X PBS with 0.1 mg/ml BSA (US sourced) and 0.05% sodium azide
<b>Isotype</b>	Mouse IgG1, kappa
<b>Clonality</b>	Monoclonal
<b>Purity</b>	Protein G affinity chromatography
<b>Uniprot ID</b>	<b>P09758</b>
<b>Hazard Information</b>	This TROP2 antibody is available for research use only.
<b>Dilution Range</b>	Immunofluorescence: 1-2ug/ml, Immunohistochemistry (FFPE): 1-2ug/ml for 30 min at RT
<b>Expiration Date</b>	12 months from date of receipt.



IHC testing of FFPE human pancreatic carcinoma



IHC testing of FFPE human pancreatic carcinoma



IHC testing of FFPE human colon carcinoma