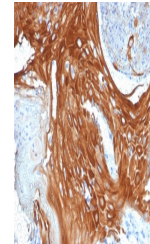


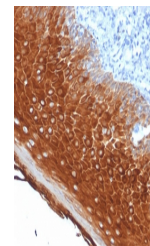
Product Datasheet

Keratin 6 Antibody / Cytokeratin 6 (orb606593)

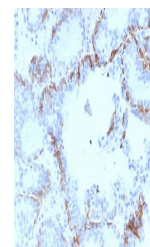
Description	This mAb recognizes a protein of 56kDa, identified as Cytokeratin 6 (CK6). In humans, multiple isofo...
Species/Host	Mouse
Reactivity	Human
Conjugation	Unconjugated
Tested Applications	FACS, IHC-P
Immunogen	Recombinant human KRT6A protein was used as the immunogen for the Cytokeratin 6 antibody.
Preservatives	0.2 mg/ml in 1X PBS with 0.1 mg/ml rAlbumin (US sourced) and 0.05% sodium azide
Storage	Store the Cytokeratin 6 antibody at 2-8°C (with azide) or aliquot and store at -20°C or colder (without azide).
Note	For research use only
Application notes	Optimal dilution of the Cytokeratin 6 antibody should be determined by the researcher.
Formula	0.2 mg/ml in 1X PBS with 0.1 mg/ml BSA (US sourced) and 0.05% sodium azide
Isotype	Mouse IgG2a, kappa
Clonality	Monoclonal
Purity	Protein G affinity chromatography
Uniprot ID	P02538
Hazard Information	This Cytokeratin 6 antibody is available for research use only.
Dilution Range	Flow cytometry: 1-2ug/million cells, Immunohistochemistry (FFPE): 1-2ug/ml for 30 min at RT
Expiration Date	12 months from date of receipt.



IHC testing of FFPE human basal cell carcinoma tissue.



IHC testing of FFPE human basal cell carcinoma tissue.



IHC testing of FFPE human prostate cancer tissue.