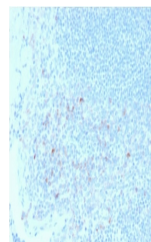


Product Datasheet

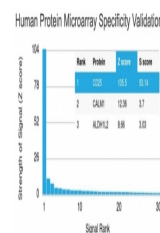
CD25 Antibody / IL2RA (orb606592)

Description	Recognizes a protein of 55 kDa, identified as CD25. It is expressed on activated T- and B-cells and ...
Species/Host	Mouse
Reactivity	Human
Conjugation	Unconjugated
Tested Applications	IHC-P
Immunogen	A portion of amino acids 42-183 was used as the immunogen for the CD25 antibody.
Preservatives	0.2 mg/ml in 1X PBS with 0.1 mg/ml rAlbumin (US sourced) and 0.05% sodium azide
Storage	Store the CD25 antibody at 2-8°C (with azide) or aliquot and store at -20°C or colder (without azide).
Note	For research use only
Application notes	Optimal dilution of the CD25 antibody should be determined by the researcher.
Formula	0.2 mg/ml in 1X PBS with 0.1 mg/ml BSA (US sourced) and 0.05% sodium azide
Isotype	Mouse IgG2b, kappa
Clonality	Monoclonal
Purity	Protein G affinity chromatography
Uniprot ID	P01589
Hazard Information	This CD25 antibody is available for research use only.
Dilution Range	Immunohistochemistry (FFPE): 2-4ug/ml for 30 min at RT
Expiration Date	12 months from date of receipt.

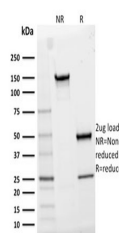


IHC testing of FFPE human tonsil tissue

...



Analysis of HuProt (TM) microarray conta...



SDS-PAGE analysis of purified, BSA-free ...