
Product Datasheet

Kappa Light Chain Antibody (orb606589)

Description

This mAb is specific to kappa light chain of


Species/Host

lambda ...

Mouse

Reactivity

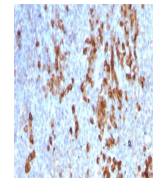
Human

Conjugation

Unconjugated

Tested Applications

IHC-P



IHC testing of FFPE human tonsil tissue ...

Immunogen

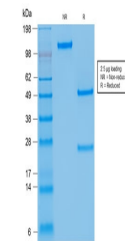
Recombinant human Ig kappa chain was used as the immunogen for this recombinant anti-Kappa light chain antibody.

Preservatives

0.2 mg/ml in 1X PBS with 0.1 mg/ml rAlbumin (US sourced) and 0.05% sodium azide

Storage

Store the recombinant anti-Kappa light chain antibody at 2-8°C (with azide) or aliquot and store at -20°C or colder (without azide).



SDS-PAGE analysis of purified, BSA-free ...

Note

For research use only

Application notes

The optimal dilution of the recombinant anti-Kappa light chain antibody for each application should be determined by the researcher.

Formula

0.2 mg/ml in 1X PBS with 0.1 mg/ml BSA (US sourced) and 0.05% sodium azide

Isotype

Mouse IgG1, kappa

Clonality

Recombinant

Purity

Protein G affinity chromatography

Uniprot ID

P01601, P01834

Hazard Information

This recombinant anti-Kappa light chain antibody is available for research use only.

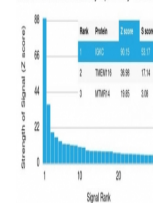
Dilution Range

Immunohistochemistry (FFPE): 1-2ug/ml for 30 min at RT

Expiration Date

12 months from date of receipt.

Human Protein Microarray Specificity Validation



Analysis of HuProt (TM) microarray conta...