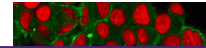

Product Datasheet

HER2 Antibody / ErbB2 (orb606583)

Description

Recognizes a protein of 185kDa, which is identified as


Species/Host

Mouse

Reactivity

Human

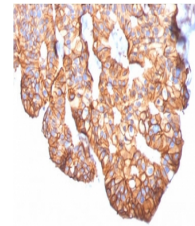
Conjugation

Unconjugated

Tested Applications

FACS, IF, IHC-P

Immunofluorescent staining of PFA-fixed ...



IHC testing of FFPE human breast carcino...

Immunogen

A portion of amino acids 311-462 from the human protein was used as the immunogen for this HER2 antibody.

Preservatives

0.2 mg/ml in 1X PBS with 0.1 mg/ml rAlbumin (US sourced) and 0.05% sodium azide

Storage

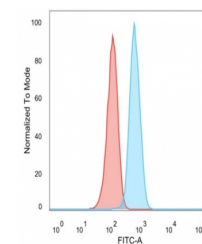
Store the HER2 antibody at 2-8°C (with azide) or aliquot and store at -20°C or colder (without azide).

Note

For research use only

Application notes

The concentration stated for each application is a general starting point. Variations in protocols, secondaries and substrates may require the HER2 antibody to be titered up or down for optimal performance.



Flow cytometry testing of PFA-fixed huma...

Formula

0.2 mg/ml in 1X PBS with 0.1 mg/ml BSA (US sourced) and 0.05% sodium azide

Isotype

Mouse IgG2a, kappa

Clonality

Monoclonal

Purity

Protein G affinity chromatography

Uniprot ID

P04626

Hazard Information

This HER2 antibody is available for research use only.

Dilution Range

Immunohistochemistry (FFPE): 1-2ug/ml for 30 min at RT, Flow cytometry: 0.5-1ug/million cells, Immunofluorescence: 0.5-1ug/ml

Expiration Date

12 months from date of receipt.