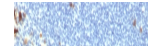

Product Datasheet

Integrin alpha E Antibody / CD103 (orb606581)

Description

This antibody recognizes a protein of 150kDa,



sub...

Species/Host

Mouse

Reactivity

Human

Conjugation

Unconjugated

Tested Applications

IHC-P

IHC testing of FFPE human tonsil with CD...

Immunogen

A portion of amino acids 775-855 from the human protein was used as the immunogen for the CD103 antibody.

Preservatives

0.2 mg/ml in 1X PBS with 0.1 mg/ml rAlbumin (US sourced) and 0.05% sodium azide

Storage

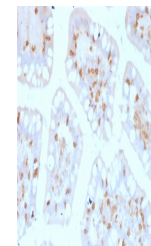
Store the CD103 antibody at 2-8°C (with azide) or aliquot and store at -20°C or colder (without azide).

Note

For research use only

Application notes

Titering of the CD103 antibody may be required for optimal performance.



IHC testing of FFPE human colon with CD1...

Formula

0.2 mg/ml in 1X PBS with 0.1 mg/ml BSA (US sourced) and 0.05% sodium azide

Isotype

Mouse IgG2b, kappa

Clonality

Monoclonal

Purity

Protein G affinity chromatography

Uniprot ID

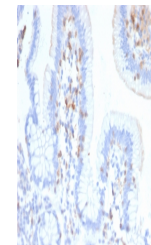
P38570

Hazard Information

This CD103 antibody is available for research use only.

Dilution Range

Immunohistochemistry (FFPE): 1-2ug/ml for 30 min at RT



IHC testing of FFPE human small intestine...

Expiration Date

12 months from date of receipt.