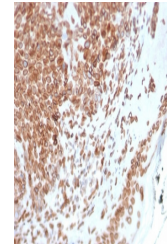


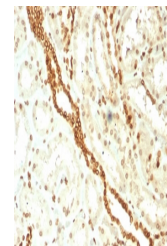
Product Datasheet

Emerin Antibody (orb606580)

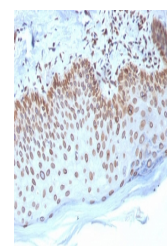
Description	Emerin is a member of the nuclear lamina associated protein family. It is ubiquitously expressed and...
Species/Host	Mouse
Reactivity	Human
Conjugation	Unconjugated
Tested Applications	IHC-P, WB
Immunogen	A portion of amino acids 56-167 from the human protein was used as the immunogen for the Emerin antibody.
Preservatives	0.2 mg/ml in 1X PBS with 0.1 mg/ml rAlbumin (US sourced) and 0.05% sodium azide
Storage	Store the Emerin antibody at 2-8°C (with azide) or aliquot and store at -20°C or colder (without azide).
Note	For research use only
Application notes	Titering of the Emerin antibody may be required for optimal performance.
Formula	0.2 mg/ml in 1X PBS with 0.1 mg/ml BSA (US sourced) and 0.05% sodium azide
Isotype	Mouse IgG2b, kappa
Clonality	Monoclonal
Purity	Protein G affinity chromatography
Uniprot ID	P50402
Hazard Information	This Emerin antibody is available for research use only.
Dilution Range	Western blot: 0.5-2ug/ml, Immunohistochemistry (FFPE): 1-2ug/ml for 30 min at RT
Expiration Date	12 months from date of receipt.



IHC testing of FFPE human basal cell carcinoma



IHC testing of FFPE human renal cell carcinoma



IHC testing of FFPE human breast carcinoma