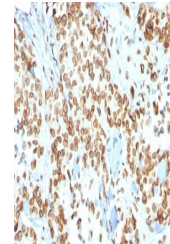


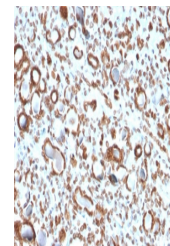
## Product Datasheet

### Emerin Antibody (orb606579)

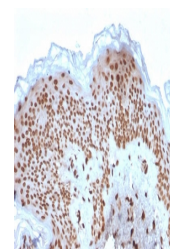
<b>Description</b>	Emerin is a member of the nuclear lamina associated protein family. It is ubiquitously expressed and...
<b>Species/Host</b>	Mouse
<b>Reactivity</b>	Human
<b>Conjugation</b>	Unconjugated
<b>Tested Applications</b>	IF, IHC-P, WB
<b>Immunogen</b>	A portion of amino acids 56-167 from the human protein was used as the immunogen for the Emerin antibody.
<b>Preservatives</b>	0.2 mg/ml in 1X PBS with 0.1 mg/ml rAlbumin (US sourced) and 0.05% sodium azide
<b>Storage</b>	Store the Emerin antibody at 2-8°C (with azide) or aliquot and store at -20°C or colder (without azide).
<b>Note</b>	For research use only
<b>Application notes</b>	Titering of the Emerin antibody may be required for optimal performance.
<b>Formula</b>	0.2 mg/ml in 1X PBS with 0.1 mg/ml BSA (US sourced) and 0.05% sodium azide
<b>Isotype</b>	Mouse IgG1, kappa
<b>Clonality</b>	Monoclonal
<b>Purity</b>	Protein G affinity chromatography
<b>Uniprot ID</b>	<b>P50402</b>
<b>Hazard Information</b>	This Emerin antibody is available for research use only.
<b>Dilution Range</b>	Western blot: 0.5-2ug/ml, Immunofluorescence: 1-3ug/ml, Immunohistochemistry (FFPE): 1-2ug/ml for 30 min at RT
<b>Expiration Date</b>	12 months from date of receipt.



IHC testing of FFPE human breast carcinoma...



IHC testing of FFPE human renal cell carcinoma...



IHC testing of FFPE human basal cell carcinoma...