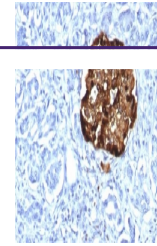

Product Datasheet

Chromogranin A Antibody (orb606572)

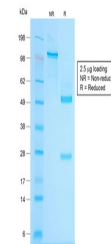
Description

Chromogranin A is present in neuroendocrine cells

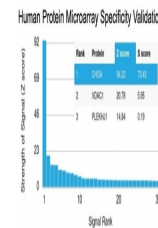
Species/Host	Rabbit
Reactivity	Human
Conjugation	Unconjugated
Tested Applications	IHC-P
Immunogen	Recombinant human protein was used as the immunogen for the recombinant Chromogranin A antibody.
Preservatives	0.2 mg/ml in 1X PBS with 0.1 mg/ml rAlbumin (US sourced) and 0.05% sodium azide
Storage	Store the recombinant Chromogranin A antibody at 2-8°C (with azide) or aliquot and store at -20°C or colder (without azide).
Note	For research use only
Application notes	Optimal dilution of the recombinant Chromogranin A antibody should be determined by the researcher.
Formula	0.2 mg/ml in 1X PBS with 0.1 mg/ml BSA (US sourced) and 0.05% sodium azide
Isotype	Rabbit IgG, kappa
Clonality	Recombinant
Purity	Protein A affinity chromatography
Uniprot ID	P10645
Hazard Information	This recombinant Chromogranin A antibody is available for research use only.
Dilution Range	Immunohistochemistry (FFPE): 0.5-1ug/ml for 30 min at RT
Expiration Date	12 months from date of receipt.



IHC analysis of FFPE human pancreas stai...



SDS-PAGE analysis of purified, BSA-free ...



Analysis of HuProt (TM) microarray conta...