
Product Datasheet

Mesothelin Antibody / MSLN (orb606569)

Description

Mesothelin is a 40kDa glycosyl-phosphatidylinositol-


Species/Host

Mouse

Reactivity

Human, Mouse, Rat

Conjugation

Unconjugated

Tested Applications

IHC-P

IHC testing of FFPE human lung mesotheli...

Immunogen

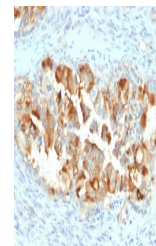
A portion of amino acids 273-407 from the human protein was used as the immunogen for this Mesothelin antibody.

Preservatives

0.2 mg/ml in 1X PBS with 0.1 mg/ml rAlbumin (US sourced) and 0.05% sodium azide

Storage

After reconstitution, the Mesothelin antibody can be stored for up to one month at 4°C. For long-term, aliquot and store at -20°C. Avoid repeated freezing and thawing.



IHC testing of FFPE human endometrial ca...

Note

For research use only

Application notes

Optimal dilution of the MSLN antibody should be determined by the researcher.

Formula

0.2 mg/ml in 1X PBS with 0.1 mg/ml BSA (US sourced) and 0.05% sodium azide

Isotype

Mouse IgG2b, kappa

Clonality

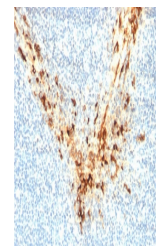
Monoclonal

Purity

Protein G affinity

Uniprot ID

[Q13421](#)



IHC testing of FFPE human tonsil with Me...

Hazard Information

This Mesothelin antibody is available for research use only.

Dilution Range

Immunohistochemistry (FFPE): 1-2ug/ml for 30 min at RT

Expiration Date

12 months from date of receipt.