

---

## Product Datasheet

### ALK Antibody / Anaplastic Lymphoma Kinase (orb606567)

**Description**

The wild-type anaplastic lymphoma kinase (ALK)



tyrosine k...

**Species/Host**

Mouse

**Reactivity**

Human

**Conjugation**

Unconjugated

**Tested Applications**

IHC-P

IHC testing of FFPE anaplastic large-cel...

**Immunogen**

A portion of amino acids 200-335 from the human protein was used as the immunogen for this ALK antibody.

**Preservatives**

0.2 mg/ml in 1X PBS with 0.1 mg/ml rAlbumin (US sourced) and 0.05% sodium azide

**Storage**

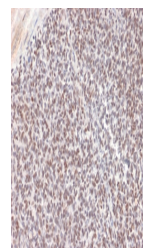
Store the recombinant ALK antibody at 2-8°C (with azide) or aliquot and store at -20°C or colder (without azide).

**Note**

For research use only

**Application notes**

The stated application concentrations are suggested starting amounts. Titration of the ALK antibody may be required due to differences in protocols and secondary/substrate sensitivity.



IHC testing of FFPE Ewing's Sarcoma with...

**Formula**

0.2 mg/ml in 1X PBS with 0.1 mg/ml BSA (US sourced) and 0.05% sodium azide

**Isotype**

Mouse IgG2b, kappa

**Clonality**

Monoclonal

**Purity**

Protein G affinity

**Uniprot ID**

**Q9UM73**

**Hazard Information**

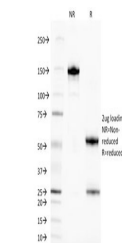
This ALK antibody is available for research use only.

**Dilution Range**

Immunohistochemistry (FFPE): 0.5-1ug/ml for 30 min at RT

**Expiration Date**

12 months from date of receipt.



SDS-PAGE analysis of purified, BSA-free ...