
Product Datasheet

Basic Cytokeratin Antibody (orb606564)

Description

This antibody recognizes CK1, CK5, CK10 and CK14. In


Species/Host

Mouse

Reactivity

Human, Mouse, Rat

Conjugation

Unconjugated

Tested Applications

IHC-P

IHC testing of FFPE human prostate cancer...

Immunogen

Recombinant full-length of human KRT76 protein was used as the immunogen for the recombinant Basic Cytokeratin antibody.

Preservatives

0.2 mg/ml in 1X PBS with 0.1 mg/ml rAlbumin (US sourced) and 0.05% sodium azide

Storage

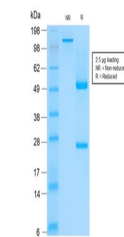
Store the recombinant Basic Cytokeratin antibody at 2-8°C (with azide) or aliquot and store at -20°C or colder (without azide).

Note

For research use only

Application notes

Optimal dilution of the recombinant Basic Cytokeratin antibody should be determined by the researcher.



SDS-PAGE analysis of purified, BSA-free ...

Formula

0.2 mg/ml in 1X PBS with 0.1 mg/ml BSA (US sourced) and 0.05% sodium azide

Isotype

Mouse IgG1, kappa

Clonality

Recombinant

Purity

Protein G affinity chromatography

Uniprot ID

[Q01546](#)

Hazard Information

This recombinant Basic Cytokeratin antibody is available for research use only.

Dilution Range

Immunohistochemistry (FFPE): 0.5-1ug/ml for 30 min at RT

Expiration Date

12 months from date of receipt.