
Product Datasheet

Basic Cytokeratin Antibody (orb606563)

Description

This antibody recognizes CK1, CK5, CK10 and CK14. In

Species/Host

Rabbit

Reactivity

Human, Mouse, Rat

Conjugation

Unconjugated

Tested Applications

FACS, IF, IHC-P, WB

Immunogen

Solubilized keratin extract from human stratum corneum was used as the immunogen for the recombinant Basic Cytokeratin antibody.

Preservatives

0.2 mg/ml in 1X PBS with 0.1 mg/ml rAlbumin (US sourced) and 0.05% sodium azide

Storage

Store the recombinant Basic Cytokeratin antibody at 2-8°C (with azide) or aliquot and store at -20°C or colder (without azide).

Note

For research use only

Application notes

Optimal dilution of the recombinant Basic Cytokeratin antibody should be determined by the researcher.

Formula

0.2 mg/ml in 1X PBS with 0.1 mg/ml BSA (US sourced) and 0.05% sodium azide

Isotype

Rabbit IgG, kappa

Clonality

Recombinant

Purity

Protein A affinity chromatography

Uniprot ID

[Q01546](#)

Hazard Information

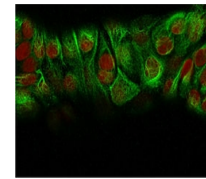
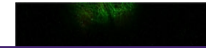
This recombinant Basic Cytokeratin antibody is available for research use only.

Dilution Range

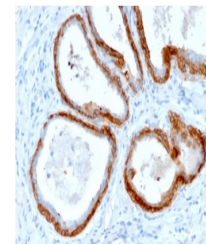
Flow cytometry: 1-2ug/million cells, Immunofluorescence: 1-2 ug/ml, Western blot: 1-2ug/ml, Immunohistochemistry (FFPE): 0.25-0.5ug/ml for 30 min at RT

Expiration Date

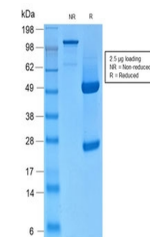
12 months from date of receipt.



Immunofluorescent staining of MeOH-fixed...



IHC testing of FFPE human prostate cancer...



SDS-PAGE analysis of purified, BSA-free ...