

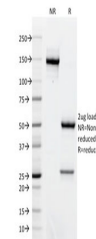
Product Datasheet

AKT1 Antibody (orb606550)

Description	The serine/threonine kinase Akt family contains several members, including Akt1 (also designated PKB...
Species/Host	Mouse
Reactivity	Human
Conjugation	Unconjugated
Tested Applications	IHC-P, WB
Immunogen	A portion of amino acids 85-189 from the human protein was used as the immunogen for the AKT1 antibody.
Preservatives	0.2 mg/ml in 1X PBS with 0.1 mg/ml rAlbumin (US sourced) and 0.05% sodium azide
Storage	Store the AKT1 antibody at 2-8°C (with azide) or aliquot and store at -20°C or colder (without azide).
Note	For research use only
Application notes	Titering of the AKT1 antibody may be required for optimal performance.
Formula	0.2 mg/ml in 1X PBS with 0.1 mg/ml BSA (US sourced) and 0.05% sodium azide
Isotype	Mouse IgG2b, kappa
Clonality	Monoclonal
Purity	Protein G affinity chromatography
Uniprot ID	P31749
Hazard Information	This AKT1 antibody is available for research use only.
Dilution Range	Immunohistochemistry (FFPE): 1-2ug/ml for 30 min at RT, Western blot: 1-2ug/ml
Expiration Date	12 months from date of receipt.

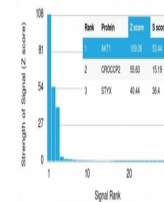


Western blot testing of human MCF7 cell ...



SDS-PAGE analysis of purified, BSA-free ...

Human Protein Microarray Specificity Validation



Analysis of HuProt (TM) microarray conta...