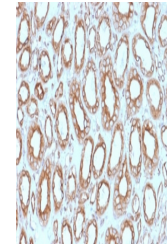


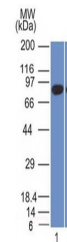
Product Datasheet

Calnexin Antibody (orb606549)

Description	It recognizes a protein of 90kDa, which is identified as Calnexin. Secretory and transmembrane prote...
Species/Host	Mouse
Reactivity	Human
Conjugation	Unconjugated
Tested Applications	ELISA, IHC-P, WB
Immunogen	A portion of amino acids 1-300 from the human protein was used as the immunogen for the Calnexin antibody.
Preservatives	0.2 mg/ml in 1X PBS with 0.1 mg/ml rAlbumin (US sourced) and 0.05% sodium azide
Storage	Store the Calnexin antibody at 2-8°C (with azide) or aliquot and store at -20°C or colder (without azide).
Note	For research use only
Application notes	Titring of the Calnexin antibody may be required for optimal performance.
Formula	0.2 mg/ml in 1X PBS with 0.1 mg/ml BSA (US sourced) and 0.05% sodium azide
Isotype	Mouse IgG1, kappa
Clonality	Monoclonal
Purity	Protein G affinity chromatography
Uniprot ID	P27824
Hazard Information	This Calnexin antibody is available for research use only.
Dilution Range	ELISA: 2-4ug/ml (order BSA/azide-free format),Western blot: 1-2ug/ml,Immunohistochemistry (FFPE): 1-2ug/ml for 30 min at RT
Expiration Date	12 months from date of receipt.



IHC testing of FFPE human renal cell carcinoma



Western blot testing of human 1) PANC-1 ...



Western blot testing of human kidney lysate