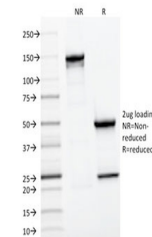


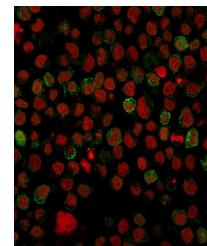
Product Datasheet

CD22 Antibody (orb606543)

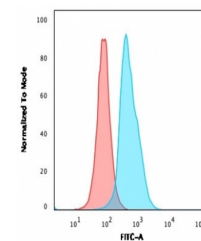
Description	Recognizes a protein of 130-140kDa, identified as CD22 (also known as BL-CAM). CD22 expression is re...
Species/Host	Mouse
Reactivity	Human
Conjugation	Unconjugated
Tested Applications	ELISA, FACS, IF, WB
Immunogen	Amino acids 52-178 from the human protein were used as the immunogen for the CD22 antibody.
Preservatives	0.2 mg/ml in 1X PBS with 0.1 mg/ml rAlbumin (US sourced) and 0.05% sodium azide
Storage	Store the CD22 antibody at 2-8°C (with azide) or aliquot and store at -20°C or colder (without azide).
Note	For research use only
Application notes	Optimal dilution of the CD22 antibody should be determined by the researcher.
Formula	0.2 mg/ml in 1X PBS with 0.1 mg/ml BSA (US sourced) and 0.05% sodium azide
Isotype	Mouse IgG2b, kappa
Clonality	Monoclonal
Purity	Protein G affinity chromatography
Uniprot ID	P20273
Hazard Information	This CD22 antibody is available for research use only.
Dilution Range	ELISA: 2-4ug/ml (order BSA/azide-free format),Western blot: 1-2ug/ml,Flow cytometry: 1-2ug/million cells,Immunofluorescence: 1-2ug/ml
Expiration Date	12 months from date of receipt.



SDS-PAGE analysis of purified, BSA-free ...



Immunofluorescent staining of human Ramos...



Flow cytometry testing of human Ramos ce...