
Product Datasheet

Cyclin A2 Antibody / CCNA2 (orb606541)

Description

This antibody recognizes a protein of 50-55 kDa, which

Species/Host

Mouse

Reactivity

Human

Conjugation

Unconjugated

Tested Applications

IHC-P

Immunogen

Full length protein was used as the immunogen for this CCNA2 antibody.

Preservatives

0.2 mg/ml in 1X PBS with 0.1 mg/ml rAlbumin (US sourced) and 0.05% sodium azide

Storage

Store the Cyclin A2 antibody at 2-8°C (with azide) or aliquot and store at -20°C or colder (without azide).

Note

For research use only

Application notes

The concentration stated for each application is a general starting point. Variations in protocols, secondaries and substrates may require the Cyclin A2 antibody to be titered up or down for optimal performance.

Formula

0.2 mg/ml in 1X PBS with 0.1 mg/ml BSA (US sourced) and 0.05% sodium azide

Isotype

Mouse IgG2a, kappa

Clonality

Monoclonal

Purity

Protein G affinity chromatography

Uniprot ID

P20248

Hazard Information

This Cyclin A2 antibody is available for research use only.

Entrez

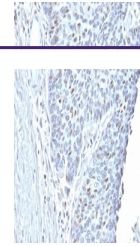
890

Dilution Range

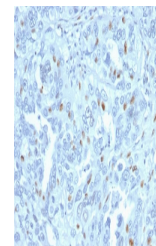
Immunohistochemistry (FFPE): 1-2ug/ml for 30 min at RT

Expiration Date

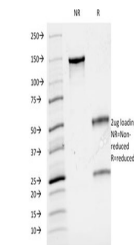
12 months from date of receipt.



IHC testing of FFPE human endometrial ca...



IHC testing of FFPE human endometrial ca...



SDS-PAGE analysis of purified, BSA-free ...