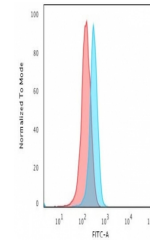


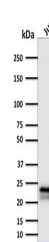
## Product Datasheet

### CD3 epsilon Antibody (orb606527)

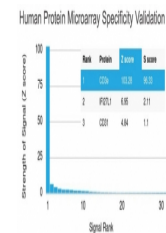
<b>Description</b>	This antibody recognizes the epsilon chain of CD3, which consists of five different polypeptide chains.
<b>Species/Host</b>	Mouse
<b>Reactivity</b>	Human
<b>Conjugation</b>	Unconjugated
<b>Tested Applications</b>	ELISA, FACS, WB
<b>Immunogen</b>	A portion of amino acids 23-119 were used as the immunogen for the CD3e antibody.
<b>Preservatives</b>	0.2 mg/ml in 1X PBS with 0.1 mg/ml rAlbumin (US sourced) and 0.05% sodium azide
<b>Storage</b>	Store the CD3e antibody at 2-8°C (with azide) or aliquot and store at -20°C or colder (without azide).
<b>Note</b>	For research use only
<b>Application notes</b>	Optimal dilution of the CD3e antibody should be determined by the researcher.
<b>Formula</b>	0.2 mg/ml in 1X PBS with 0.1 mg/ml BSA (US sourced) and 0.05% sodium azide
<b>Isotype</b>	Mouse IgG1, kappa
<b>Clonality</b>	Monoclonal
<b>Purity</b>	Protein G affinity chromatography
<b>Uniprot ID</b>	<b>P07766</b>
<b>Hazard Information</b>	This CD3e antibody is available for research use only.
<b>Dilution Range</b>	Flow cytometry: 1-2ug/million cells,ELISA: 2-4ug/ml (order BSA/azide-free format),Western blot: 1-2ug/ml
<b>Expiration Date</b>	12 months from date of receipt.



Flow cytometry testing of human Jurkat C...



Western blot testing of human Jurkat cel...



Analysis of HuProt (TM) microarray conta...