

---

## Product Datasheet

### SMMHC Antibody (Smooth Muscle Myosin Heavy Chain) (orb606516)

**Description**

Smooth muscle myosin heavy chain (SM-MHC) is



comp...

**Species/Host**

Rabbit

**Reactivity**

Human

**Conjugation**

Unconjugated

**Tested Applications**

IHC-P

IHC testing of FFPE human breast carcino...

**Immunogen**

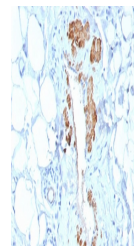
Recombinant human protein was used as the immunogen for the recombinant SMMHC antibody.

**Preservatives**

0.2 mg/ml in 1X PBS with 0.1 mg/ml rAlbumin (US sourced) and 0.05% sodium azide

**Storage**

Store the recombinant SMMHC antibody at 2-8°C (with azide) or aliquot and store at -20°C or colder (without azide).


**Note**

For research use only

IHC testing of FFPE human breast carcino...

**Application notes**

Optimal dilution of the recombinant SMMHC antibody should be determined by the researcher.1. The prediluted format is supplied in a dropper bottle and is optimized for use in IHC. After epitope retrieval step (if required), drip mAb solution onto the tissue section and incubate at RT for 30 min.

**Formula**

0.2 mg/ml in 1X PBS with 0.1 mg/ml BSA (US sourced) and 0.05% sodium azide

**Isotype**

Rabbit IgG, kappa

**Clonality**

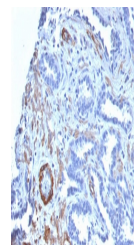
Recombinant

**Purity**

Protein A affinity chromatography

**Uniprot ID**

**P35749**



IHC testing of FFPE human prostate carc...

**Hazard Information**

This recombinant SMMHC antibody is available for research use only.

**Dilution Range**

Immunohistochemistry (FFPE): 1-2ug/ml for 30 min at RT

**Expiration Date**

12 months from date of receipt.