

---

## Product Datasheet

### MUC6 Antibody / Gastric Mucin (orb606512)

**Description**

MUC6 or gastric mucin is a secreted glycoprotein that


**Species/Host**

Rabbit

**Reactivity**

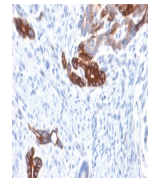
Human

**Conjugation**

Unconjugated

**Tested Applications**

IHC-P



IHC staining of FFPE human gastric carci...

**Immunogen**

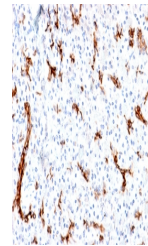
A peptide from the MUC6 tandem repeat sequence was used as the immunogen for the recombinant Gastric Mucin antibody.

**Preservatives**

0.2 mg/ml in 1X PBS with 0.1 mg/ml rAlbumin (US sourced) and 0.05% sodium azide

**Storage**

Store the recombinant Gastric Mucin antibody at 2-8°C (with azide) or aliquot and store at -20°C or colder (without azide).



IHC staining of FFPE human pancreas with...

**Note**

For research use only

**Application notes**

Optimal dilution of the recombinant Gastric Mucin antibody should be determined by the researcher.1. The prediluted format is supplied in a dropper bottle and is optimized for use in IHC. After epitope retrieval step (if required), drip mAb solution onto the tissue section and incubate at RT for 30 min.

**Formula**

0.2 mg/ml in 1X PBS with 0.1 mg/ml BSA (US sourced) and 0.05% sodium azide

**Isotype**

Rabbit IgG, kappa

**Clonality**

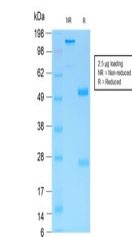
Recombinant

**Purity**

Protein A affinity chromatography

**Uniprot ID**

[Q6W4X9](#)



SDS-PAGE analysis of purified, BSA-free ...

**Hazard Information**

This recombinant Gastric Mucin antibody is available for research use only.

**Dilution Range**

Immunohistochemistry (FFPE): 2-4ug/ml for 30 min at RT (1)

**Expiration Date**

12 months from date of receipt.