
Product Datasheet

Glypican 3 Antibody / GPC3 (orb606508)

Description

Glypican-3 (GPC3) is a glycosylphosphatidyl inositol-


Species/Host

Mouse

Reactivity

Human

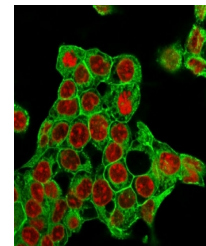
Conjugation

Unconjugated

Tested Applications

FACS, IF, IHC-P

IHC testing of FFPE human hepatocellular...



Immunofluorescent staining of methanol-f...

Immunogen

Recombinant full-length human Glypican 3 protein was used as the immunogen for the recombinant GPC3 antibody.

Preservatives

0.2 mg/ml in 1X PBS with 0.1 mg/ml rAlbumin (US sourced) and 0.05% sodium azide

Storage

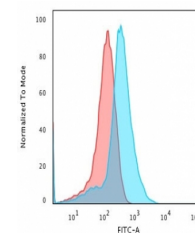
Store the recombinant GPC3 antibody at 2-8°C (with azide) or aliquot and store at -20°C or colder (without azide).

Note

For research use only

Application notes

Optimal dilution of the recombinant GPC3 antibody should be determined by the researcher.1. The prediluted format is supplied in a dropper bottle and is optimized for use in IHC. After epitope retrieval step (if required), drip mAb solution onto the tissue section and incubate at RT for 30 min.
2. View the non-recombinant version of this a href=../tds/glypican-3-antibody-gpc3-863-v2538>GPC3 antibody.



Flow cytometry testing of methanol-fixed...

Formula

0.2 mg/ml in 1X PBS with 0.1 mg/ml BSA (US sourced) and 0.05% sodium azide

Isotype

Mouse IgG1, kappa

Clonality

Recombinant

Purity

Protein G affinity chromatography

Uniprot ID

P51654

Hazard Information

This recombinant GPC3 antibody is available for research use only.

Dilution Range

Flow cytometry: 1-2ug/million cells, Immunofluorescence: 1-2ug/ml, Immunohistochemistry (FFPE): 1-2ug/ml for 30 min at RT

Expiration Date

12 months from date of receipt.