

---

## Product Datasheet

### Multi Cytokeratin Antibody (orb606503)

**Description**

Twenty human keratins are resolved with two-

sub...

**Species/Host**

Rabbit

**Reactivity**

Human

**Conjugation**

Unconjugated

**Tested Applications**

IF, IHC-P

**Immunogen**

A Keratin-enriched preparation from cultured human epithelial cells was used as the immunogen for the recombinant Multi Cytokeratin antibody.

**Preservatives**

0.2 mg/ml in 1X PBS with 0.1 mg/ml rAlbumin (US sourced) and 0.05% sodium azide

**Storage**

Store the recombinant Multi Cytokeratin antibody at 2-8°C (with azide) or aliquot and store at -20°C or colder (without azide).

**Note**

For research use only

**Application notes**

Optimal dilution of the recombinant Multi Cytokeratin antibody should be determined by the researcher. 1. The prediluted format is supplied in a dropper bottle and is optimized for use in IHC. After epitope retrieval step (if required), drip mAb solution onto the tissue section and incubate at RT for 30 min.

**Formula**

0.2 mg/ml in 1X PBS with 0.1 mg/ml BSA (US sourced) and 0.05% sodium azide

**Isotype**

Rabbit IgG, kappa

**Clonality**

Recombinant

**Purity**

Protein A affinity chromatography

**Hazard Information**

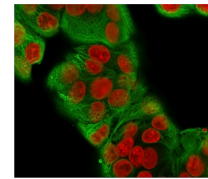
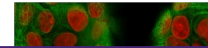
This recombinant Multi Cytokeratin antibody is available for research use only.

**Dilution Range**

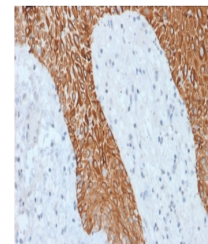
Immunofluorescence: 1-2ug/ml, Immunohistochemistry (FFPE): 1-2ug/ml for 30 min at RT

**Expiration Date**

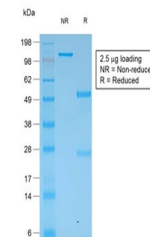
12 months from date of receipt.



Immunofluorescent staining of methanol-f...



IHC staining of FFPE human skin with rec...



SDS-PAGE analysis of purified, BSA-free ...