
Product Datasheet

Multi Cytokeratin Antibody (orb606502)

Description

Twenty human keratins are resolved with two-

sub...

Species/Host

Mouse

Reactivity

Human

Conjugation

Unconjugated

Tested Applications

IHC-P

Immunogen

A Keratin-enriched preparation from cultured human epithelial cells was used as the immunogen for the recombinant Multi Cytokeratin antibody.

Preservatives

0.2 mg/ml in 1X PBS with 0.1 mg/ml rAlbumin (US sourced) and 0.05% sodium azide

Storage

Store the recombinant Multi Cytokeratin antibody at 2-8°C (with azide) or aliquot and store at -20°C or colder (without azide).

Note

For research use only

Application notes

Optimal dilution of the recombinant Multi Cytokeratin antibody should be determined by the researcher.1.The prediluted format is supplied in a dropper bottle and is optimized for use in IHC. After epitope retrieval step (if required), drip mAb solution onto the tissue section and incubate at RT for 30 min.

Formula

0.2 mg/ml in 1X PBS with 0.1 mg/ml BSA (US sourced) and 0.05% sodium azide

Isotype

Mouse IgG1, kappa

Clonality

Recombinant

Purity

Protein G affinity chromatography

Uniprot ID

multi

Hazard Information

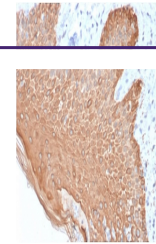
This recombinant Multi Cytokeratin antibody is available for research use only.

Dilution Range

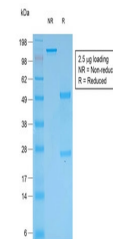
Immunohistochemistry (FFPE): 1-2ug/ml for 30 min at RT

Expiration Date

12 months from date of receipt.



IHC staining of FFPE human skin with rec...



SDS-PAGE analysis of purified, BSA-free ...