

---

## Product Datasheet

### CD22 Antibody (orb606498)

**Description**

Recognizes a protein of 130-140kDa, identified as CD22

**Species/Host**

Mouse

**Reactivity**

Human

**Conjugation**

Unconjugated

**Tested Applications**

ELISA, FACS, IF, IHC-P, WB

**Immunogen**

Amino acids 52-178 from the human protein were used as the immunogen for the CD22 antibody.

**Preservatives**

0.2 mg/ml in 1X PBS with 0.1 mg/ml rAlbumin (US sourced) and 0.05% sodium azide

**Storage**

Store the CD22 antibody at 2-8°C (with azide) or aliquot and store at -20°C or colder (without azide).

**Note**

For research use only

**Application notes**

Optimal dilution of the CD22 antibody should be determined by the researcher.

**Formula**

0.2 mg/ml in 1X PBS with 0.1 mg/ml BSA (US sourced) and 0.05% sodium azide

**Isotype**

Mouse IgG1, kappa

**Clonality**

Monoclonal

**Purity**

Protein G affinity chromatography

**Uniprot ID**

[P20273](#)

**Hazard Information**

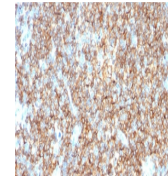
This CD22 antibody is available for research use only.

**Dilution Range**

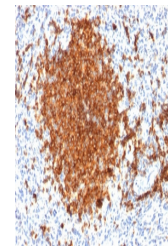
ELISA: 2-4ug/ml (order BSA/azide-free format),Flow cytometry: 1-2ug/million cells,Western blot: 1-2ug/ml,Immunofluorescence: 1-2ug/ml,Immunohistochemistry (FFPE): 1-2ug/ml for 30 min at RT

**Expiration Date**

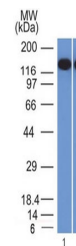
12 months from date of receipt.



IHC testing of FFPE human tonsil tissue ...



IHC testing of FFPE human spleen tissue ...



Western blot testing of FFPE human 1) Ra...