

---

## Product Datasheet

### Cadherin 16 Antibody (orb606497)

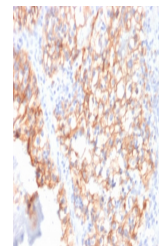
**Description**

Cadherins form a superfamily of related glycoproteins that

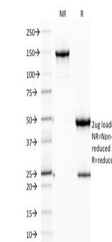
<b>Species/Host</b>	Mouse
<b>Reactivity</b>	Human
<b>Conjugation</b>	Unconjugated
<b>Tested Applications</b>	ELISA, IHC-P, WB
<b>Immunogen</b>	Recombinant human partial protein (within amino acids 371-507) was used as the immunogen for the Cadherin 16 antibody.
<b>Preservatives</b>	0.2 mg/ml in 1X PBS with 0.1 mg/ml rAlbumin (US sourced) and 0.05% sodium azide
<b>Storage</b>	Store the Cadherin 16 antibody at 2-8°C (with azide) or aliquot and store at -20°C or colder (without azide).
<b>Note</b>	For research use only
<b>Application notes</b>	Optimal dilution of the Cadherin 16 antibody to be determined by the researcher.1. The prediluted format is supplied in a dropper bottle and is optimized for use in IHC. After epitope retrieval step (if required), drip mAb solution onto the tissue section and incubate at RT for 30 min.
<b>Formula</b>	0.2 mg/ml in 1X PBS with 0.1 mg/ml BSA (US sourced) and 0.05% sodium azide
<b>Isotype</b>	Mouse IgG1, kappa
<b>Clonality</b>	Monoclonal
<b>Purity</b>	Protein G affinity chromatography
<b>Uniprot ID</b>	<a href="#">O75309</a>
<b>Hazard Information</b>	This Cadherin 16 antibody is available for research use only.
<b>Dilution Range</b>	ELISA (order BSA/sodium azide-free format for coating),Western blot: 1-2ug/ml,Immunohistochemistry (FFPE): 1-2ug/ml for 30 min at RT
<b>Expiration Date</b>	12 months from date of receipt.



Western blot testing of human kidney lys...



IHC testing of FFPE human renal cell car...



SDS-PAGE analysis of purified, BSA-free ...