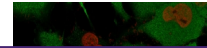

Product Datasheet

PGP9.5 / UchL1 Antibody (orb606485)

Description

This mAb reacts with a protein of 20-30kDa, identified


Species/Host

Mouse

Reactivity

Human, Rat

Conjugation

Unconjugated

Tested Applications

FACS, IF, IHC-P, WB

Immunofluorescent staining of permeabilized cells

Immunogen

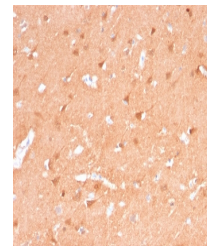
Recombinant human protein was used as the immunogen for the recombinant PGP9.5 antibody.

Preservatives

0.2 mg/ml in 1X PBS with 0.1 mg/ml rAlbumin (US sourced) and 0.05% sodium azide

Storage

Store the recombinant PGP9.5 antibody at 2-8°C (with azide) or aliquot and store at -20°C or colder (without azide).



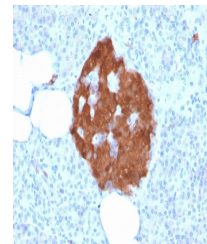
IHC staining of FFPE human cerebellum tissue

Note

For research use only

Application notes

Optimal dilution of the recombinant PGP9.5 antibody should be determined by the researcher.1. The prediluted format is supplied in a dropper bottle and is optimized for use in IHC. After epitope retrieval step (if required), drip mAb solution onto the tissue section and incubate at RT for 30 min.



IHC staining of FFPE human pancreas tissue

Formula

0.2 mg/ml in 1X PBS with 0.1 mg/ml BSA (US sourced) and 0.05% sodium azide

Isotype

Mouse IgG1, kappa

Clonality

Recombinant

Purity

Protein G affinity chromatography

Uniprot ID

P09936

Hazard Information

This recombinant PGP9.5 antibody is available for research use only.

Dilution Range

Western blot: 1-2ug/ml, Flow cytometry: 1-2ug/million cells, Immunofluorescence: 1-2ug/ml, Immunohistochemistry (FFPE): 1-2ug/ml for 30 min at RT

Expiration Date

12 months from date of receipt.