
Product Datasheet

HPV-16 L1 Antibody (orb606483)

Description

Reacts with a protein of 57kDa, identified as the L1

Species/Host

Rabbit

Reactivity

Virus

Conjugation

Unconjugated

Tested Applications

IHC-P

Immunogen

Human papilloma virus type 16, major capsid protein L1, was used as the immunogen for the recombinant HPV16 L1 antibody.

Preservatives

0.2 mg/ml in 1X PBS with 0.1 mg/ml rAlbumin (US sourced) and 0.05% sodium azide

Storage

Store the recombinant HPV16 L1 antibody at 2-8°C (with azide) or aliquot and store at -20°C or colder (without azide).

Note

For research use only

Application notes

The stated application concentrations are suggested starting points. Titration of the recombinant HPV16 L1 antibody may be required due to differences in protocols and secondary/substrate sensitivity.1. The prediluted format is supplied in a dropper bottle and is optimized for use in IHC. After epitope retrieval step (if required), drip mAb solution onto the tissue section and incubate at RT for 30 min.

Formula

0.2 mg/ml in 1X PBS with 0.1 mg/ml BSA (US sourced) and 0.05% sodium azide

Isotype

Rabbit IgG, kappa

Clonality

Recombinant

Purity

Protein A affinity chromatography

Uniprot ID

P03101

Hazard Information

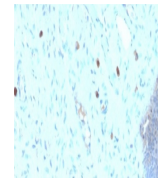
This recombinant HPV16 L1 antibody is available for research use only.

Dilution Range

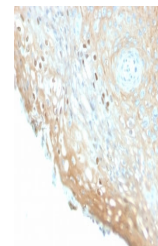
Immunohistochemistry (FFPE): 0.5-1ug/ml for 30 min at RT

Expiration Date

12 months from date of receipt.



IHC staining of FFPE human cervix with r...



SDS-PAGE analysis of purified, BSA-free ...