
Product Datasheet

MUC16 Antibody / CA125 (orb606471)

Description

The mucins are a family of highly glycosylated, secreted


Species/Host

Rabbit

Reactivity

Human

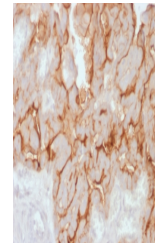
Conjugation

Unconjugated

Tested Applications

IHC-P

IHC testing of FFPE human endometrial ca...



IHC testing of FFPE human ovarian carcin...

Immunogen

A recombinant partial protein was used as the immunogen for the recombinant MUC16 antibody.

Preservatives

0.2 mg/ml in 1X PBS with 0.1 mg/ml rAlbumin (US sourced) and 0.05% sodium azide

Storage

Store the recombinant MUC16 antibody at 2-8°C (with azide) or aliquot and store at -20°C or colder (without azide).

Note

For research use only

Application notes

Optimal dilution of the recombinant MUC16 antibody should be determined by the researcher.1. The prediluted format is supplied in a dropper bottle and is optimized for use in IHC. After epitope retrieval step (if required), drip mAb solution onto the tissue section and incubate at RT for 30 min.

Formula

0.2 mg/ml in 1X PBS with 0.1 mg/ml BSA (US sourced) and 0.05% sodium azide

Isotype

Rabbit IgG, kappa

Clonality

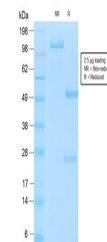
Recombinant

Purity

Protein A affinity chromatography

Uniprot ID

[Q8WXI7](#)



SDS-PAGE analysis of purified, BSA-free ...

Hazard Information

This recombinant MUC16 antibody is available for research use only.

Dilution Range

Immunohistochemistry (FFPE): 1-2ug/ml for 30 min at RT

Expiration Date

12 months from date of receipt.