

---

## Product Datasheet

### Parathyroid Hormone Antibody / N Terminal (orb606468)

**Description**

PTH/Parathyroid hormone is a hormone produced by



concentrat...

**Species/Host**

Mouse

**Reactivity**

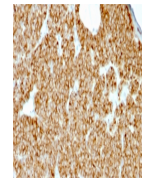
Human

**Conjugation**

Unconjugated

**Tested Applications**

IHC-P



IHC testing of FFPE human parathyroid gl...

**Immunogen**

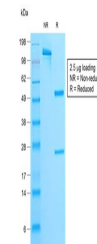
A synthetic peptide from the N-terminal region of the human protein was used as the immunogen for the recombinant Parathyroid Hormone antibody.

**Preservatives**

0.2 mg/ml in 1X PBS with 0.1 mg/ml rAlbumin (US sourced) and 0.05% sodium azide

**Storage**

Store the recombinant Parathyroid Hormone antibody at 2-8°C (with azide) or aliquot and store at -20°C or colder (without azide).



SDS-PAGE analysis of purified, BSA-free ...

**Note**

For research use only

**Application notes**

Optimal dilution of the recombinant Parathyroid Hormone antibody should be determined by the researcher.1. The prediluted format is supplied in a dropper bottle and is optimized for use in IHC. After epitope retrieval step (if required), drip mAb solution onto the tissue section and incubate at RT for 30 min.

**Formula**

0.2 mg/ml in 1X PBS with 0.1 mg/ml BSA (US sourced) and 0.05% sodium azide

**Isotype**

Mouse IgG2b, kappa

**Clonality**

Recombinant

**Purity**

Protein G affinity chromatography

**Uniprot ID**

**P01270**

**Hazard Information**

This recombinant Parathyroid Hormone antibody is available for research use only.

**Dilution Range**

Immunohistochemistry (FFPE; not suitable for frozen tissues): 0.5-1ug/ml for 30 min at RT

**Expiration Date**

12 months from date of receipt.