

---

## Product Datasheet

### **MMP3 Antibody / Matrix Metalloproteinase 3 (orb606464)**

**Description**

The matrix metalloproteinases (MMP) are a family

degradatio...

**Species/Host**

Rabbit

**Reactivity**

Human

**Conjugation**

Unconjugated

**Tested Applications**

ELISA, FACS, WB

**Immunogen**

Amino acids 317-327 were used as the immunogen for the recombinant MMP3 antibody.

**Preservatives**

0.2 mg/ml in 1X PBS with 0.1 mg/ml rAlbumin (US sourced) and 0.05% sodium azide

**Storage**

Store the recombinant MMP3 antibody at 2-8°C (with azide) or aliquot and store at -20°C or colder (without azide).

**Note**

For research use only

**Application notes**

Optimal dilution of the recombinant MMP3 antibody should be determined by the researcher.1. The prediluted format is supplied in a dropper bottle and is optimized for use in IHC. After epitope retrieval step (if required), drip mAb solution onto the tissue section and incubate at RT for 30 min.

**Formula**

0.2 mg/ml in 1X PBS with 0.1 mg/ml BSA (US sourced) and 0.05% sodium azide

**Isotype**

Rabbit IgG, kappa

**Clonality**

Recombinant

**Purity**

Protein A affinity chromatography

**Uniprot ID**

**P08254**

**Hazard Information**

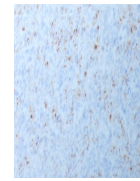
This recombinant MMP3 antibody is available for research use only.

**Dilution Range**

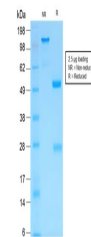
ELISA (order BSA/sodium azide-free format for coating),Flow cytometry: 1-2ug/million cells,Western blot: 0.5-1ug/ml

**Expiration Date**

12 months from date of receipt.



IHC testing of FFPE human spleen with re...



SDS-PAGE analysis of purified, BSA-free ...