
Product Datasheet

TG Antibody / Thyroglobulin (orb606462)

Description

Thyroglobulin (Tg) is a 660 kDa, dimeric protein


Species/Host

Rabbit

Reactivity

Human

Conjugation

Unconjugated

Tested Applications

IHC-P

Immunogen

Human thyroid follicular cells were used as the immunogen for the recombinant Thyroglobulin antibody.

Preservatives

0.2 mg/ml in 1X PBS with 0.1 mg/ml rAlbumin (US sourced) and 0.05% sodium azide

Storage

Store the recombinant Thyroglobulin antibody at 2-8°C (with azide) or aliquot and store at -20°C or colder (without azide).

Note

For research use only

Application notes

The stated application concentrations are suggested starting points. Titration of the recombinant Thyroglobulin antibody may be required due to differences in protocols and secondary/substrate sensitivity.1. The prediluted format is supplied in a dropper bottle and is optimized for use in IHC. After epitope retrieval step (if required), drip mAb solution onto the tissue section and incubate at RT for 30 min.

Formula

0.2 mg/ml in 1X PBS with 0.1 mg/ml BSA (US sourced) and 0.05% sodium azide

Isotype

Rabbit IgG, kappa

Clonality

Recombinant

Purity

Protein A affinity chromatography

Uniprot ID

P01266

Hazard Information

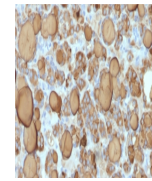
This recombinant Thyroglobulin antibody is available for research use only.

Dilution Range

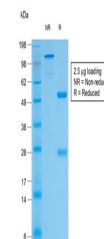
Immunohistochemistry (FFPE): 0.5-1ug/ml for 30 min at RT

Expiration Date

12 months from date of receipt.



IHC testing of FFPE human thyroid carcin...



SDS-PAGE analysis of purified, BSA-free ...