
Product Datasheet

TG Antibody / Thyroglobulin (orb606453)

Description

Thyroglobulin is a 660 kDa dimeric pre-protein with


Species/Host

Mouse

Reactivity

Human

Conjugation

Unconjugated

Tested Applications

IHC-P

Immunogen

Human thyroid follicular cells were used as the immunogen for the recombinant TG antibody.

Preservatives

0.2 mg/ml in 1X PBS with 0.1 mg/ml rAlbumin (US sourced) and 0.05% sodium azide

Storage

Store the recombinant TG antibody at 2-8°C (with azide) or aliquot and store at -20°C or colder (without azide).

Note

For research use only

Application notes

Optimal dilution of the recombinant TG antibody should be determined by the researcher.1. The prediluted format is supplied in a dropper bottle and is optimized for use in IHC. After epitope retrieval step (if required), drip mAb solution onto the tissue section and incubate at RT for 30 min.

Formula

0.2 mg/ml in 1X PBS with 0.1 mg/ml BSA (US sourced) and 0.05% sodium azide

Isotype

Mouse IgG1, kappa

Clonality

Recombinant

Purity

Protein G affinity chromatography

Uniprot ID

P01266

Hazard Information

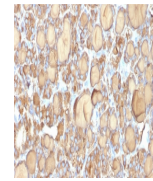
This recombinant TG antibody is available for research use only.

Dilution Range

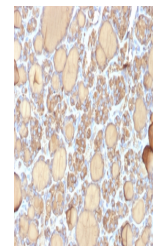
Immunohistochemistry (FFPE): 0.25-0.5ug/ml for 30 min at RT

Expiration Date

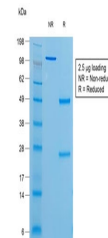
12 months from date of receipt.



IHC:
Formalin-fixed,
paraffin-embedded
h...



IHC:
Formalin-fixed,
paraffin-embedded
h...



SDS-PAGE
analysis of
purified,
BSA-free ...