
Product Datasheet

KRT16 Antibody / Cytokeratin 16 (orb606448)

Description

Cytokeratins are a family of intermediate filament


Species/Host

Mouse

Reactivity

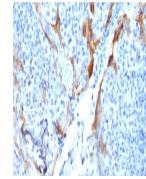
Human

Conjugation

Unconjugated

Tested Applications

IHC-P



IHC testing of FFPE human tonsil with Cy...

Immunogen

A C-terminal partial protein was used as the immunogen for the Cytokeratin 16 antibody.

Preservatives

0.2 mg/ml in 1X PBS with 0.1 mg/ml rAlbumin (US sourced) and 0.05% sodium azide

Storage

Store the Cytokeratin 16 antibody at 2-8°C (with azide) or aliquot and store at -20°C or colder (without azide).

Note

For research use only

Application notes

Optimal dilution of the Cytokeratin 16 antibody should be determined by the researcher.1. The prediluted format is supplied in a dropper bottle and is optimized for use in IHC. After epitope retrieval step (if required), drip mAb solution onto the tissue section and incubate at RT for 30 min.

Formula

0.2 mg/ml in 1X PBS with 0.1 mg/ml BSA (US sourced) and 0.05% sodium azide

Isotype

Mouse IgG1, kappa

Clonality

Monoclonal

Purity

Protein G affinity chromatography

Uniprot ID

P08779

Hazard Information

This Cytokeratin 16 antibody is available for research use only.

Dilution Range

Immunohistochemistry (FFPE): 0.1-0.2ug/ml for 30 min at RT

Expiration Date

12 months from date of receipt.