

---

## Product Datasheet

### FOXA1 Antibody (orb606445)

**Description**

Transcription factor that is involved in embryonic

**Species/Host**

Mouse

**Reactivity**

Human, Rat

**Conjugation**

Unconjugated

**Tested Applications**

FACS, IHC-P

**Immunogen**

A human recombinant partial protein corresponding to amino acids 372-472 was used as the immunogen for this recombinant FOXA1 antibody.

**Preservatives**

0.2 mg/ml in 1X PBS with 0.1 mg/ml rAlbumin (US sourced) and 0.05% sodium azide

**Storage**

Store the recombinant FOXA1 antibody at 2-8°C (with azide) or aliquot and store at -20°C or colder (without azide).

**Note**

For research use only

**Application notes**

The concentration stated for each application is a general starting point. Variations in protocols, secondaries and substrates may require the recombinant FOXA1 antibody to be titrated up or down for optimal performance.1. The prediluted format is supplied in a dropper bottle and is optimized for use in IHC. After epitope retrieval step (if required), drip mAb solution onto the tissue section and incubate at RT for 30 min.

**Formula**

0.2 mg/ml in 1X PBS with 0.1 mg/ml BSA (US sourced) and 0.05% sodium azide

**Isotype**

Mouse IgG1, kappa

**Clonality**

Recombinant

**Purity**

Protein G affinity chromatography

**Uniprot ID**

**P55317**

**Hazard Information**

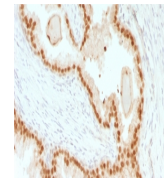
This recombinant FOXA1 antibody is available for research use only.

**Dilution Range**

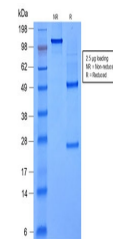
Immunohistochemistry (FFPE): 1-2ug/ml for 30 min at RT, Flow cytometry: 1-2ug/million cells

**Expiration Date**

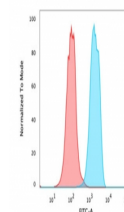
12 months from date of receipt.



IHC testing of FFPE human prostate carcinoma...



SDS-PAGE analysis of purified, BSA-free ...



FACS testing of PFA-fixed human MCF-7 cells...