
Product Datasheet

KRT19 Antibody / Cytokeratin 19 (orb606443)

Description

Recognizes a protein of 40kDa, identified as

glan...

Species/Host

Rabbit

Reactivity

Human

Conjugation

Unconjugated

Tested Applications

IHC-P, WB

Immunogen

Human mammary epithelial organoids were used as the immunogen for the recombinant KRT19 antibody.

Preservatives

0.2 mg/ml in 1X PBS with 0.1 mg/ml rAlbumin (US sourced) and 0.05% sodium azide

Storage

Store the recombinant KRT19 antibody at 2-8°C (with azide) or aliquot and store at -20°C or colder (without azide).

Note

For research use only

Application notes

Optimal dilution of the recombinant KRT19 antibody should be determined by the researcher.1. The prediluted format is supplied in a dropper bottle and is optimized for use in IHC. After epitope retrieval step (if required), drip mAb solution onto the tissue section and incubate at RT for 30 min.

Formula

0.2 mg/ml in 1X PBS with 0.1 mg/ml BSA (US sourced) and 0.05% sodium azide

Isotype

Rabbit IgG, kappa

Clonality

Recombinant

Purity

Protein A affinity chromatography

Uniprot ID
P08727
Hazard Information

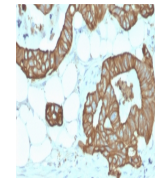
This recombinant KRT19 antibody is available for research use only.

Dilution Range

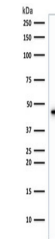
Western blot: 1-2ug/ml, Immunohistochemistry (FFPE): 1-2ug/ml for 30 min at RT

Expiration Date

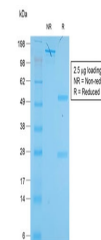
12 months from date of receipt.



IHC testing of FFPE human colon tissue w...



Western blot testing of human HepG2 anti...



SDS-PAGE analysis of purified, BSA-free ...