

---

## Product Datasheet

### KRT15 Antibody / Cytokeratin 15 (orb606440)

**Description**

Keratins are a family of intermediate filament proteins


**Species/Host**

Rabbit

**Reactivity**

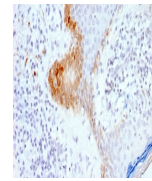
Human

**Conjugation**

Unconjugated

**Tested Applications**

FACS, IHC-P



IHC testing of FFPE human skin with reco...

**Immunogen**

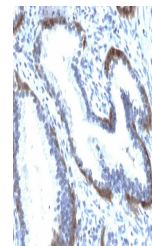
Recombinant human protein was used as the immunogen for the recombinant Cytokeratin 15 antibody.

**Preservatives**

0.2 mg/ml in 1X PBS with 0.1 mg/ml rAlbumin (US sourced) and 0.05% sodium azide

**Storage**

Store the recombinant Cytokeratin 15 antibody at 2-8°C (with azide) or aliquot and store at -20°C or colder (without azide).



IHC testing of FFPE human prostate tissue...

**Note**

For research use only

**Application notes**

Optimal dilution of the recombinant Cytokeratin 15 antibody should be determined by the researcher.1. The prediluted format is supplied in a dropper bottle and is optimized for use in IHC. After epitope retrieval step (if required), drip mAb solution onto the tissue section and incubate at RT for 30 min.

**Formula**

0.2 mg/ml in 1X PBS with 0.1 mg/ml BSA (US sourced) and 0.05% sodium azide

**Isotype**

Rabbit IgG, kappa

**Clonality**

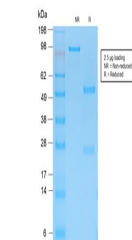
Recombinant

**Purity**

Protein A affinity chromatography

**Uniprot ID**

**P19012**



SDS-PAGE analysis of purified, BSA-free ...

**Hazard Information**

This recombinant Cytokeratin 15 antibody is available for research use only.

**Dilution Range**

Flow cytometry: 1-2ug/million cells, Immunohistochemistry (FFPE): 0.5-1ug/ml for 30 min at RT

**Expiration Date**

12 months from date of receipt.