

---

## Product Datasheet

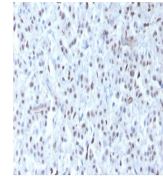
### WT1 Antibody / Wilms Tumor 1 (orb606435)

**Description**

Recognizes a 47-55kDa-tumor suppressor protein,


**Species/Host**

Mouse


**Reactivity**

Human

**Conjugation**

Unconjugated

**Tested Applications**

IHC-P

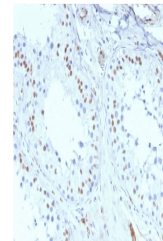
IHC testing of FFPE human mesothelioma w...

**Immunogen**

A recombinant human protein was used as the immunogen for the recombinant WT1 antibody.

**Preservatives**

0.2 mg/ml in 1X PBS with 0.1 mg/ml rAlbumin (US sourced) and 0.05% sodium azide


**Storage**

Store the recombinant WT1 antibody at 2-8°C (with azide) or aliquot and store at -20°C or colder (without azide).

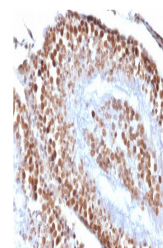
**Note**

For research use only

**Application notes**

Optimal dilution of the recombinant WT1 antibody should be determined by the researcher.1. The prediluted format is supplied in a dropper bottle and is optimized for use in IHC. After epitope retrieval step (if required), drip mAb solution onto the tissue section and incubate at RT for 30 min.2. This is the recombinant version of clone [a href=../tds/wt1-antibody-wt1-857-v2932>WT1/857](#).

IHC testing of FFPE human testis with re...


**Formula**

0.2 mg/ml in 1X PBS with 0.1 mg/ml BSA (US sourced) and 0.05% sodium azide

**Isotype**

Mouse IgG1, kappa

IHC testing of FFPE rat testis with reco...

**Clonality**

Recombinant

**Purity**

Protein G affinity chromatography

**Uniprot ID**

**P19544**

**Hazard Information**

This recombinant WT1 antibody is available for research use only.

**Dilution Range**

Immunohistochemistry (FFPE): 1-2ug/ml for 30 min at RT

**Expiration Date**

12 months from date of receipt.