
Product Datasheet

HCG-beta Antibody (orb606433)

Description

This antibody reacts with a protein of 22kDa, identified as


Species/Host

Rabbit

Reactivity

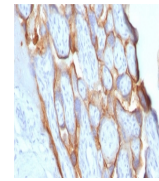
Human

Conjugation

Unconjugated

Tested Applications

IHC-P



IHC testing of
FFPE human
placenta with

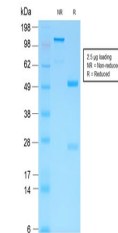
...

Immunogen

Recombinant protein was used as the immunogen for this recombinant HCG-beta antibody.

Preservatives

0.2 mg/ml in 1X PBS with 0.1 mg/ml rAlbumin (US sourced) and 0.05% sodium azide



SDS-PAGE
analysis of
purified, BSA-
free ...

Storage

Store the recombinant HCG-beta antibody at 2-8°C (with azide) or aliquot and store at -20°C or colder (without azide).

Note

For research use only

Application notes

The concentration stated for each application is a general starting point. Variations in protocols, secondaries and substrates may require the recombinant HCG-beta antibody to be titered up or down for optimal performance.1. The prediluted format is supplied in a dropper bottle and is optimized for use in IHC. After epitope retrieval step (if required), drip mAb solution onto the tissue section and incubate at RT for 30 min.

Formula

0.2 mg/ml in 1X PBS with 0.1 mg/ml BSA (US sourced) and 0.05% sodium azide

Isotype

Rabbit IgG, kappa

Clonality

Recombinant

Purity

Protein A affinity chromatography

Hazard Information

This recombinant HCG-beta antibody is available for research use only.

Entrez

[1082](#)

Dilution Range

Immunohistochemistry (FFPE): 1-2ug/ml for 30 min at RT

Expiration Date

12 months from date of receipt.