
Product Datasheet

CEA Antibody / Carcinoembryonic Antigen (orb606425)

Description

Carcinoembryonic antigen (CEA) describes a set of


Species/Host

Rabbit

Reactivity

Human

Conjugation

Unconjugated

Tested Applications

IHC-P

IHC testing of FFPE human melanoma with ...

Immunogen

Recombinant human protein was used as the immunogen for this recombinant CEA antibody.

Preservatives

0.2 mg/ml in 1X PBS with 0.1 mg/ml rAlbumin (US sourced) and 0.05% sodium azide

Storage

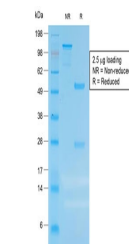
Store the recombinant CEA antibody at 2-8°C (with azide) or aliquot and store at -20°C or colder (without azide).

Note

For research use only

Application notes

Optimal dilution of the recombinant CEA antibody should be determined by the researcher..1. The prediluted format is supplied in a dropper bottle and is optimized for use in IHC. After epitope retrieval step (if required), drip mAb solution onto the tissue section and incubate at RT for 30 min.



SDS-PAGE analysis of purified, BSA-free ...

Formula

0.2 mg/ml in 1X PBS with 0.1 mg/ml BSA (US sourced) and 0.05% sodium azide

Isotype

Rabbit IgG, kappa

Clonality

Recombinant

Purity

Protein A affinity chromatography

Uniprot ID

P06731

Hazard Information

This recombinant CEA antibody is available for research use only.

Dilution Range

Immunohistochemistry (FFPE): 1-2ug/ml for 30 min at RT (1) (2)

Expiration Date

12 months from date of receipt.