

---

## Product Datasheet

### Kappa Light Chain Antibody (orb606418)

**Description**

This mAb is specific to kappa light chain of


**Species/Host**

lambda ...

Rabbit

**Reactivity**

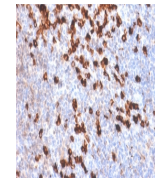
Human

**Conjugation**

Unconjugated

**Tested Applications**

IHC-P



IHC testing of FFPE human tonsil tissue ...

**Immunogen**

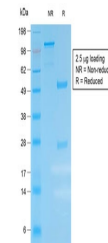
Recombinant human Ig kappa chain was used as the immunogen for this recombinant anti-Kappa antibody.

**Preservatives**

0.2 mg/ml in 1X PBS with 0.1 mg/ml rAlbumin (US sourced) and 0.05% sodium azide

**Storage**

Store the recombinant anti-Kappa antibody at 2-8°C (with azide) or aliquot and store at -20°C or colder (without azide).



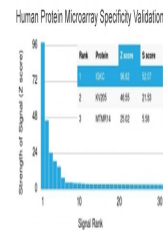
SDS-PAGE analysis of purified, BSA-free ...

**Note**

For research use only

**Application notes**

The optimal dilution of the recombinant anti-Kappa antibody for each application should be determined by the researcher.1. The prediluted format is supplied in a dropper bottle and is optimized for use in IHC. After epitope retrieval step (if required), drip mAb solution onto the tissue section and incubate at RT for 30 min.



Analysis of HuProt (TM) microarray conta...

**Formula**

0.2 mg/ml in 1X PBS with 0.1 mg/ml BSA (US sourced) and 0.05% sodium azide

**Isotype**

Rabbit IgG, kappa

**Clonality**

Recombinant

**Purity**

Protein A affinity chromatography

**Uniprot ID**

**P01834, P01601**

**Hazard Information**

This recombinant anti-Kappa antibody is available for research use only.

**Dilution Range**

Immunohistochemistry (FFPE): 1-2ug/ml for 30 min at RT

**Expiration Date**

12 months from date of receipt.