
Product Datasheet

Cadherin 16 Antibody (orb606414)

Description

This mAb recognizes a protein of 130kDa, identified as


Species/Host

Mouse

Reactivity

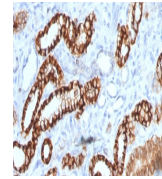
Human, Mouse, Rat

Conjugation

Unconjugated

Tested Applications

FACS, IHC-P, WB



IHC testing of FFPE human renal cell carcinoma...

Immunogen

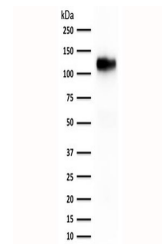
Recombinant full length human protein was used as the immunogen for the recombinant Cadherin 16 antibody.

Preservatives

0.2 mg/ml in 1X PBS with 0.1 mg/ml rAlbumin (US sourced) and 0.05% sodium azide

Storage

Store the recombinant Cadherin 16 antibody at 2-8°C (with azide) or aliquot and store at -20°C or colder (without azide).



Western blot testing of human kidney lysate...

Note

For research use only

Application notes

Optimal dilution of the recombinant Cadherin 16 antibody to be determined by the researcher.1. The prediluted format is supplied in a dropper bottle and is optimized for use in IHC. After epitope retrieval step (if required), drip mAb solution onto the tissue section and incubate at RT for 30 min.

Formula

0.2 mg/ml in 1X PBS with 0.1 mg/ml BSA (US sourced) and 0.05% sodium azide

Isotype

Mouse IgG1, kappa

Clonality

Recombinant

Purity

Protein G affinity chromatography

Uniprot ID

075309

Hazard Information

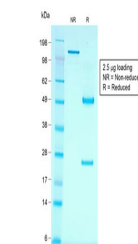
This recombinant Cadherin 16 antibody is available for research use only.

Dilution Range

Flow cytometry: 1-2ug/million cells, Western blot: 1-2ug/ml, Immunohistochemistry (FFPE): 1-2ug/ml for 30 min at RT

Expiration Date

12 months from date of receipt.



SDS-PAGE analysis of purified, BSA-free ...