

---

## Product Datasheet

### Estrogen Receptor alpha Antibody (orb606409)

**Description**

This mAb is specific to ER alpha and shows minimal

**Species/Host**

Mouse

**Reactivity**

Human

**Conjugation**

Unconjugated

**Tested Applications**

IHC-P, WB

**Immunogen**

Human Estrogen Receptor alpha protein was used as the immunogen for this recombinant Estrogen Receptor alpha antibody.

**Preservatives**

0.2 mg/ml in 1X PBS with 0.1 mg/ml rAlbumin (US sourced) and 0.05% sodium azide

**Storage**

Store the recombinant Estrogen Receptor alpha antibody at 2-8°C (with azide) or aliquot and store at -20°C or colder (without azide).

**Note**

For research use only

**Application notes**

The optimal dilution of the recombinant Estrogen Receptor alpha antibody for each application should be determined by the researcher.1. The prediluted format is supplied in a dropper bottle and is optimized for use in IHC. After epitope retrieval step (if required), drip mAb solution onto the tissue section and incubate at RT for 30 min.

**Formula**

0.2 mg/ml in 1X PBS with 0.1 mg/ml BSA (US sourced) and 0.05% sodium azide

**Isotype**

Mouse IgG1, kappa

**Clonality**

Recombinant

**Purity**

Protein G affinity chromatography

**Uniprot ID**

**P03372**

**Hazard Information**

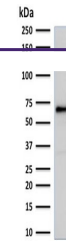
This recombinant Estrogen Receptor alpha antibody is available for research use only.

**Dilution Range**

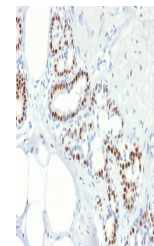
Western blot: 1-2ug/ml, Immunohistochemistry (FFPE): 1-2ug/ml for 30 min at RT

**Expiration Date**

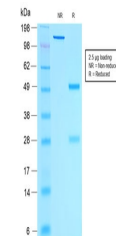
12 months from date of receipt.



Western blot testing of MCF7 cell lysate...



IHC testing of FFPE human breast cancer ...



SDS-PAGE analysis of purified, BSA-free ...