

---

## Product Datasheet

### HSP60 Antibody (orb606404)

**Description**

Recognizes a 60kDa protein, identified as the heat shock


**Species/Host**

Mouse

**Reactivity**

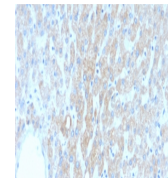
Human

**Conjugation**

Unconjugated

**Tested Applications**

IHC-P, WB



IHC testing of FFPE human liver tissue

W...

**Immunogen**

Recombinant human protein was used as the immunogen for the recombinant HSP60 antibody. The Its epitope has been localized between amino acids 383-447.

**Preservatives**

0.2 mg/ml in 1X PBS with 0.1 mg/ml rAlbumin (US sourced) and 0.05% sodium azide



Western blot testing of human HeLa lysat...

**Storage**

Store the recombinant HSP60 antibody at 2-8°C (with azide) or aliquot and store at -20°C or colder (without azide).

**Note**

For research use only

**Application notes**

Optimal dilution of the recombinant HSP60 antibody should be determined by the researcher.1. The prediluted format is supplied in a dropper bottle and is optimized for use in IHC. After epitope retrieval step (if required), drip mAb solution onto the tissue section and incubate at RT for 30 min.

**Formula**

0.2 mg/ml in 1X PBS with 0.1 mg/ml BSA (US sourced) and 0.05% sodium azide

**Isotype**

Mouse IgG1, kappa

**Clonality**

Recombinant

**Purity**

Protein G affinity chromatography

**Uniprot ID**

**P10809**

**Hazard Information**

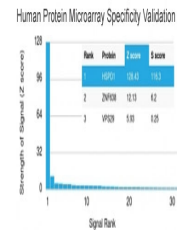
This recombinant HSP60 antibody is available for research use only.

**Dilution Range**

Western blot: 1-2ug/ml, Immunohistochemistry (FFPE): 1-2ug/ml for 30 min at RT (1)

**Expiration Date**

12 months from date of receipt.



Analysis of HuProt (TM) microarray conta...