
Product Datasheet

CD30 Antibody (orb606397)

Description

The antibody recognizes a single chain glycoprotein of


Species/Host

Mouse

Reactivity

Human

Conjugation

Unconjugated

Tested Applications

IHC-P

Immunogen

Full length human protein was used as the immunogen for this recombinant CD30 antibody.

Preservatives

0.2 mg/ml in 1X PBS with 0.1 mg/ml rAlbumin (US sourced) and 0.05% sodium azide

Storage

Store the recombinant CD30 antibody at 2-8°C (with azide) or aliquot and store at -20°C or colder (without azide).

Note

For research use only

Application notes

The concentration stated for each application is a general starting point. Variations in protocols, secondaries and substrates may require the recombinant CD30 antibody to be titrated up or down for optimal performance.1. The prediluted format is supplied in a dropper bottle and is optimized for use in IHC. After epitope retrieval step (if required), drip mAb solution onto the tissue section and incubate at RT for 30 min.

Formula

0.2 mg/ml in 1X PBS with 0.1 mg/ml BSA (US sourced) and 0.05% sodium azide

Isotype

Mouse IgG2a, kappa

Clonality

Recombinant

Purity

Protein G affinity chromatography

Uniprot ID

P28908

Hazard Information

This recombinant CD30 antibody is available for research use only.

Entrez

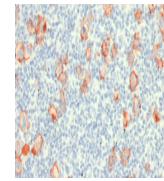
943

Dilution Range

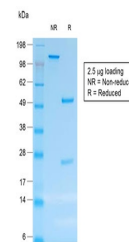
Immunohistochemistry (FFPE): 0.5-1ug/ml for 30 min at RT

Expiration Date

12 months from date of receipt.



IHC testing of
FFPE
Hodgkin's
Lymphoma
W...



SDS-PAGE
analysis of
purified, BSA-
free ...